



# The Tarkio Fund Philosophy

A No-Load Fund Managed by Front St. Capital Management



\*Updated as of December 31st, 2020

Tarkio Fund is focused on compounding our shareholders' capital at above-average rates over the long term. As an equity investor, we believe we are an owner of the business, and we therefore see ourselves as business analysts rather than market analysts. We believe in a strict adherence to certain specific criteria for determining the quality of the businesses we buy: criteria based on the assumption that great managers can create a corporate culture of empowerment for their employees that results in strong customer loyalty and company performance over time. We think our businesses will outcompete their peers over extended periods of time, better weathering the downturns and capitalizing on the upturns. Our companies are built on teamwork, trust, and continuous improvement. Once we identify these companies we wait for market fluctuations to present us with attractive prices at which to buy them, and we intend to hold them indefinitely.

***"When we own portions of outstanding businesses with outstanding managements, our favorite holding period is forever" - Warren Buffett***

## Our Guiding Principles

| Ticker Symbol              | TARKX            |
|----------------------------|------------------|
| Cusip Number               | 18143P104        |
| Inception Date             | 6/28/2011        |
| Minimum Initial Investment | \$ 2,500         |
| Expense Ratio              | 1.00 %           |
| Number of Holdings         | 30               |
| Assets Under Management    | \$ 135.8 Million |

- Integrity— Do we believe that management acts in an ethical manner?
- Long-Term Focus—Is the company looking beyond what happens next quarter?
- Teamwork—Incentivizing cooperation, not competition among employees
- Purpose and Passion—Are leaders and employees passionate about the business and its potential to help their customers?
- Employee Empowerment—Do management practices promote trust and drive fear out of the organization?
- Disciplined Capital Allocation—Does the business operate within its financial means?

| 1 Year Performance (12/31/2020)          | Total Return % |
|------------------------------------------|----------------|
| Tarkio Fund                              | 26.38%         |
| S&P 500 Index*                           | 16.26%         |
| 5 Year Performance (12/31/2020)          |                |
| Tarkio Fund                              | 18.24%**       |
| S&P 500 Index*                           | 18.72%**       |
| Since Inception Performance (12/31/2020) |                |
| Tarkio Fund                              | 17.15%**       |
| S&P 500 Index*                           | 21.68%**       |

\*Return does not include reinvestment of dividends

\*\*Annualized Return

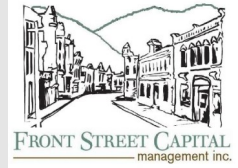
The past performance shown here reflects reinvested distributions, and does not guarantee future results. Shares will fluctuate in value and, when redeemed, may be worth more or less than their original cost. Current performance may be lower or higher than the performance cited. For the most recent month-end performance, call mutual shareholder services at (866) 738-3629 or visit us on the web at [www.tarkiofund.com](http://www.tarkiofund.com)

Tarkio Fund is distributed by Arbor Court Capital, LLC—Member FINRA. The fund's investment objective, risks, charges, and expenses should be considered carefully before investing. The prospectus contains this and other important information about the fund, and it may be obtained by calling Mutual Shareholder Services at (866) 738-3629 or visiting us on the web at [www.tarkiofund.com](http://www.tarkiofund.com)

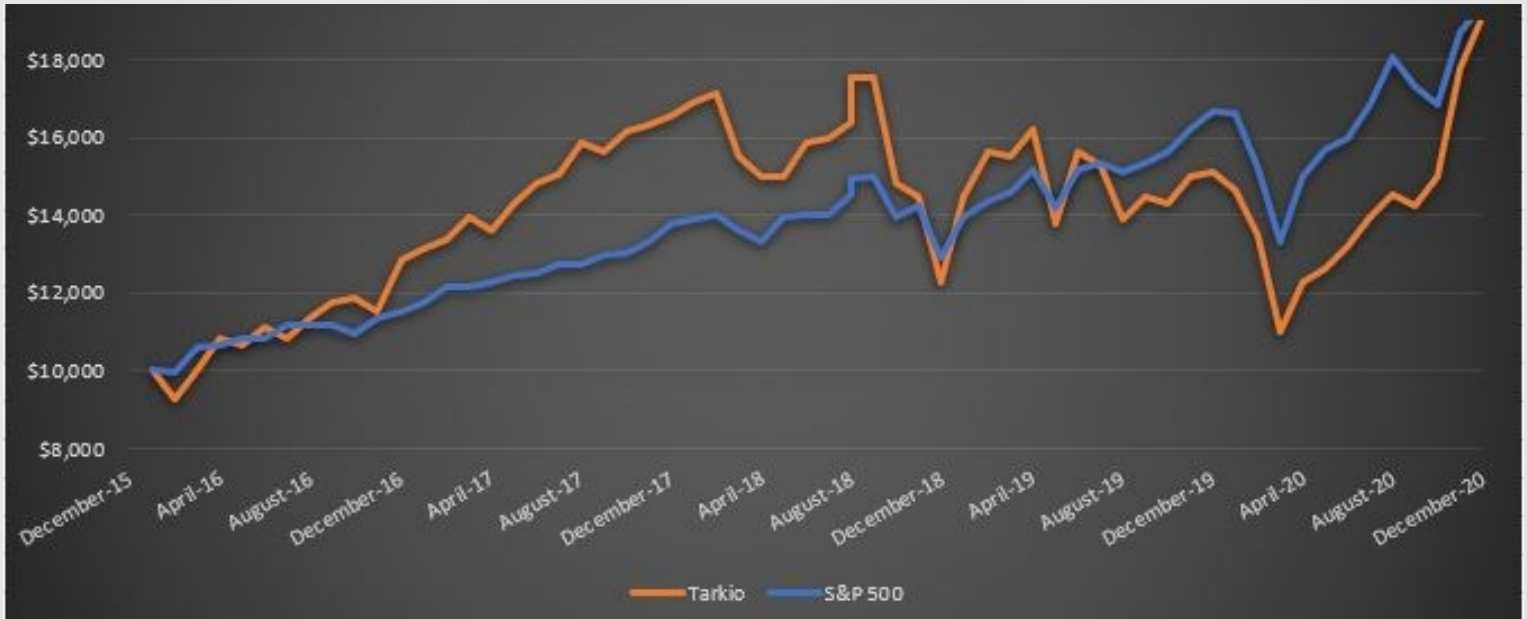


# Tarkio Fund Performance

A No-Load Fund Managed by Front St. Capital Management



## Growth of \$10,000 (5 Year Period)



The chart above covers the period from December 31st, 2015 of Tarkio Fund (the "fund" or "TARKX") to December 31st, 2020. **Performance information quoted above represents past performance and does not guarantee future results. The investment return and principal value of an investment in the fund will fluctuate so that an investor's shares, when redeemed, may be worth more or less than their original cost. Current performance may be lower or higher than the performance information quoted above. Performance figures assume reinvestment of dividends and capital gains. Most recent month-end performance and answers to any questions you may have can be obtained by calling Mutual Shareholder Services at (866) 738-3629.** The S&P 500 Index is a broad based measurement of changes in the stock market, is used for comparative purposes only, and is not meant to be indicative of the fund's performance, asset composition, or volatility. Given the wide scope of securities held by the S&P 500 Index, it should be inherently less volatile. Our results may differ markedly from those of the S&P500 Index in either up or down market trends. The performance of the S&P 500 Index is shown with all dividends reinvested into the index and does not reflect any reduction in performance for the effects of transactions costs or management fees. Investors cannot invest directly in an index. The expense ratio of the fund is 1.00%. The expense ratio includes acquired fund fees and expenses which are incurred indirectly by the fund as a result of investments in securities issued by one or more investment companies.

### Top 10 Holdings (as of December 31st, 2020)

| Company Name              | Ticker Symbol | Weight |
|---------------------------|---------------|--------|
| Cognex Corp.              | CGNX          | 12.85% |
| The St. Joe Co.           | JOE           | 10.18% |
| The Manitowoc Co.         | MTW           | 8.31%  |
| CenturyLink, Inc.         | LUMN          | 7.41%  |
| The Container Store Croup | TCS           | 3.81%  |
| General Electric Co.      | GE            | 3.77%  |
| Danaher Corp.             | DHR           | 3.66%  |
| Herman Miller, Inc.       | MLHR          | 3.55%  |
| Colfax Corp.              | CFX           | 3.38%  |
| Berkshire Hathaway Inc. B | BRK/B         | 3.36%  |

### Asset Allocation (as of December 31st, 2020)

|               | Amount           | Weight |
|---------------|------------------|--------|
| Common Stocks | \$135,629,505.20 | 99.74% |
| Cash          | \$349,880.54     | .26%   |

The fund's investment objective, risks, charges, and expenses should be considered carefully before investing. The prospectus contains this and other important information about the fund, and it may be obtained by calling Mutual Shareholder Services at (866) 738-3629 or visiting us on the web at [www.tarkiofund.com](http://www.tarkiofund.com)